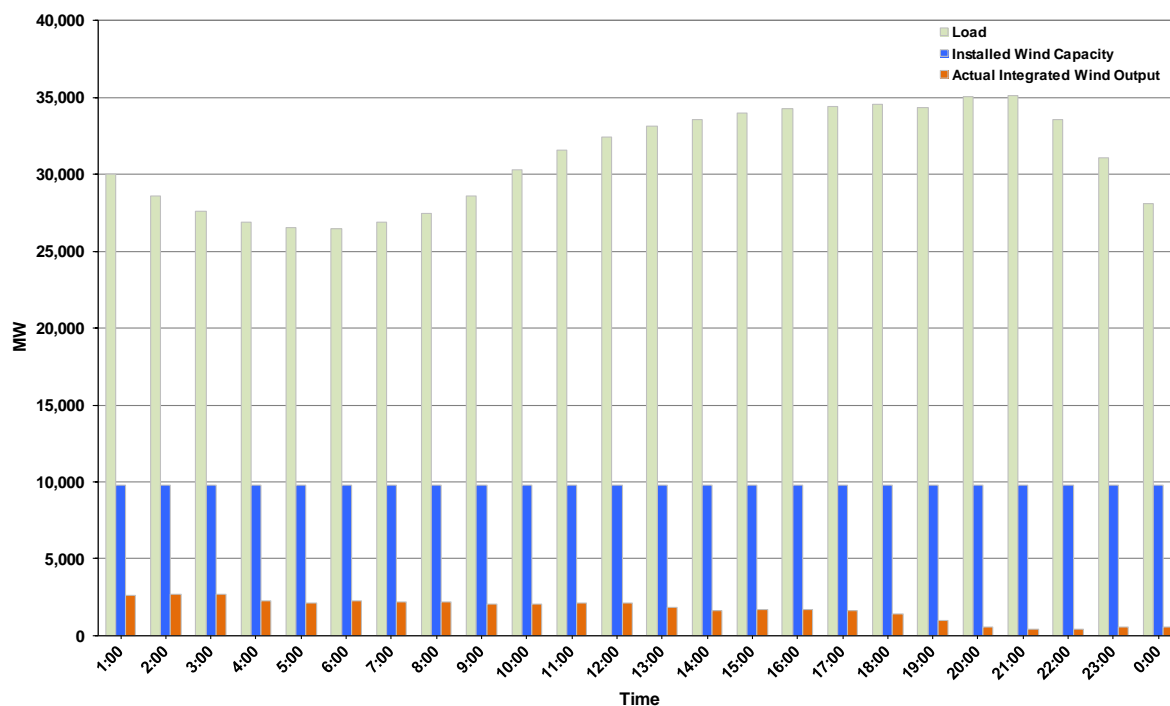




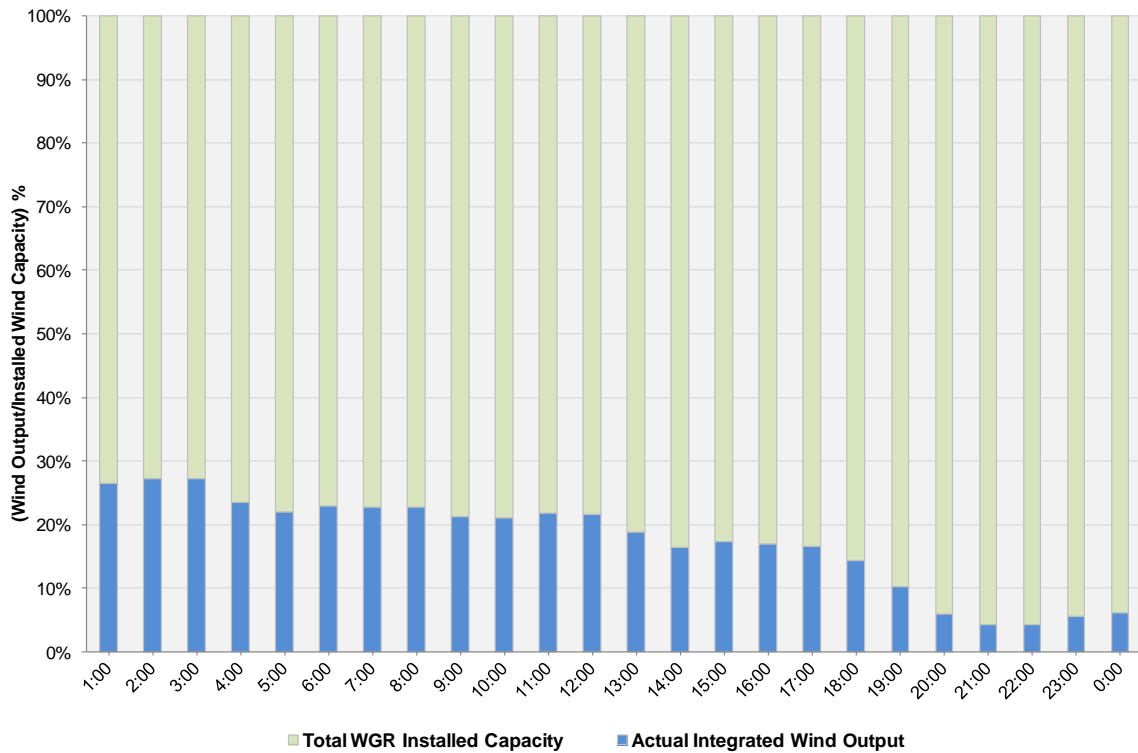
## ERCOT Grid Operations Wind Integration Report: 09/30/2012

Peak Load	35,128 MW
Load Peak Hour (HE)	21
Wind over Peak	419 MW
Wind Record 06/19/12	8,368 MW
Max Wind Value	2,878 MW
Wind Peak Time	02:26
Wind Integration %	10.42%

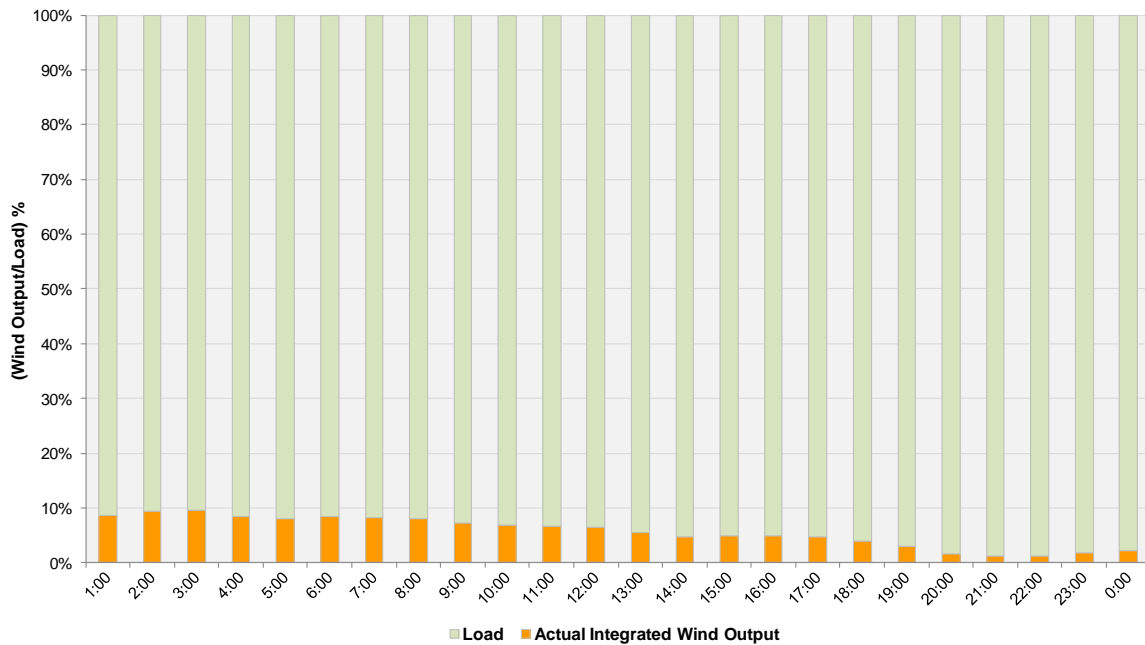
**Hourly Average Actual Load vs. Actual Wind Output  
09-30-2012**



**Actual Wind Output as a Percentage of the Total Installed Wind Capacity  
09-30-2012**



**Actual Wind Output as a Percentage of the ERCOT Load  
09-30-2012**



ERCOT Load vs. Actual Wind Output 9/23/2012 - 9/30/2012

